

# CALIFORNIA DEPARTMENT OF FISH AND WILDLIFE

## 2023 CALIFORNIA DEER HUNT ZONES

Note: This map should serve only as a guide for the general locations of deer hunting zones. Detailed legal descriptions of deer hunting zones and deer hunt boundaries are provided in Section 360 and 361 of the California Code of Regulations Title 14.

### California Department of Fish & Wildlife 2023 Deer Hunt Seasons by Zone\*

ZONE	ARCHERY SEASON	GENERAL SEASON
<b>A</b>	JULY 06 - JUL 30	AUG 12 - SEPT 24
<b>B</b> B1, B2, B3, B5	AUG 19 - SEPT 10	SEPT 16 - OCT 22
B4	JULY 22 - AUG 13	AUG 26 - OCT 01
B6	AUG 19 - SEPT 10	SEPT 16 - OCT 15
<b>C</b>		
C1*	*MUST USE HUNT TAG A.1 AUG 19 - SEPT 03	SEPT 16 - OCT 15
C2*, C3*	*MUST USE HUNT TAG A.1 AUG 19 - SEPT 10	SEPT 16 - OCT 22
C4*	*MUST USE HUNT TAG A.1 AUG 19 - SEPT 03	SEPT 16 - OCT 01
<b>D</b> D3, D4, D5	AUG 19 - SEPT 10	SEPT 23 - OCT 29
D6, D7	AUG 19 - SEPT 10	SEPT 16 - OCT 29
D8, D9, D10	AUG 19 - SEPT 10	SEPT 23 - OCT 22
D11, D13, D15	SEPT 02 - SEPT 24	OCT 14 - NOV 12
D12	OCT 07 - OCT 29	NOV 04 - NOV 26
D14	SEPT 02 - SEPT 24	OCT 14 - NOV 12
D16	SEPT 02 - SEPT 24	OCT 28 - NOV 26
D17	SEPT 02 - SEPT 24	OCT 14 - NOV 06
D19	SEPT 02 - SEPT 24	OCT 07 - NOV 06
<b>X</b> X1*, X2*, X3a*, X3b*, X4*	*MUST USE HUNT TAGS A.3, A.4, A.5, A.6, A.7 AUG 19 - SEPT 10	OCT 07 - OCT 22
X5a*, X5b*, X6a*, X6b*, X6c*	*MUST USE HUNT TAGS A.8, A.9, A.11, A.12 AUG 19 - SEPT 10	OCT 07 - OCT 22
X7a*, X7b*	*MUST USE HUNT TAGS A.13, A.14 AUG 19 - SEPT 10	OCT 07 - OCT 22
X8*	*MUST USE HUNT TAG A.15 AUG 19 - SEPT 10	SEPT 23 - OCT 08
X9a*, X9b*	*MUST USE HUNT TAGS A.16, A.17 AUG 19 - SEPT 10	SEPT 16 - OCT 09
X9c*	*MUST USE HUNT TAG A.18 AUG 19 - SEPT 10	OCT 21 - NOV 12
X10*	*MUST USE HUNT TAG A.19 AUG 19 - SEPT 03	SEPT 30 - OCT 15
X12*	*MUST USE HUNT TAG A.20 AUG 19 - SEPT 10	SEPT 16 - OCT 09

\*Hunting during archery season in these zones requires possession of an area-specific Archery Tag.

### 2023 Additional Deer Hunts

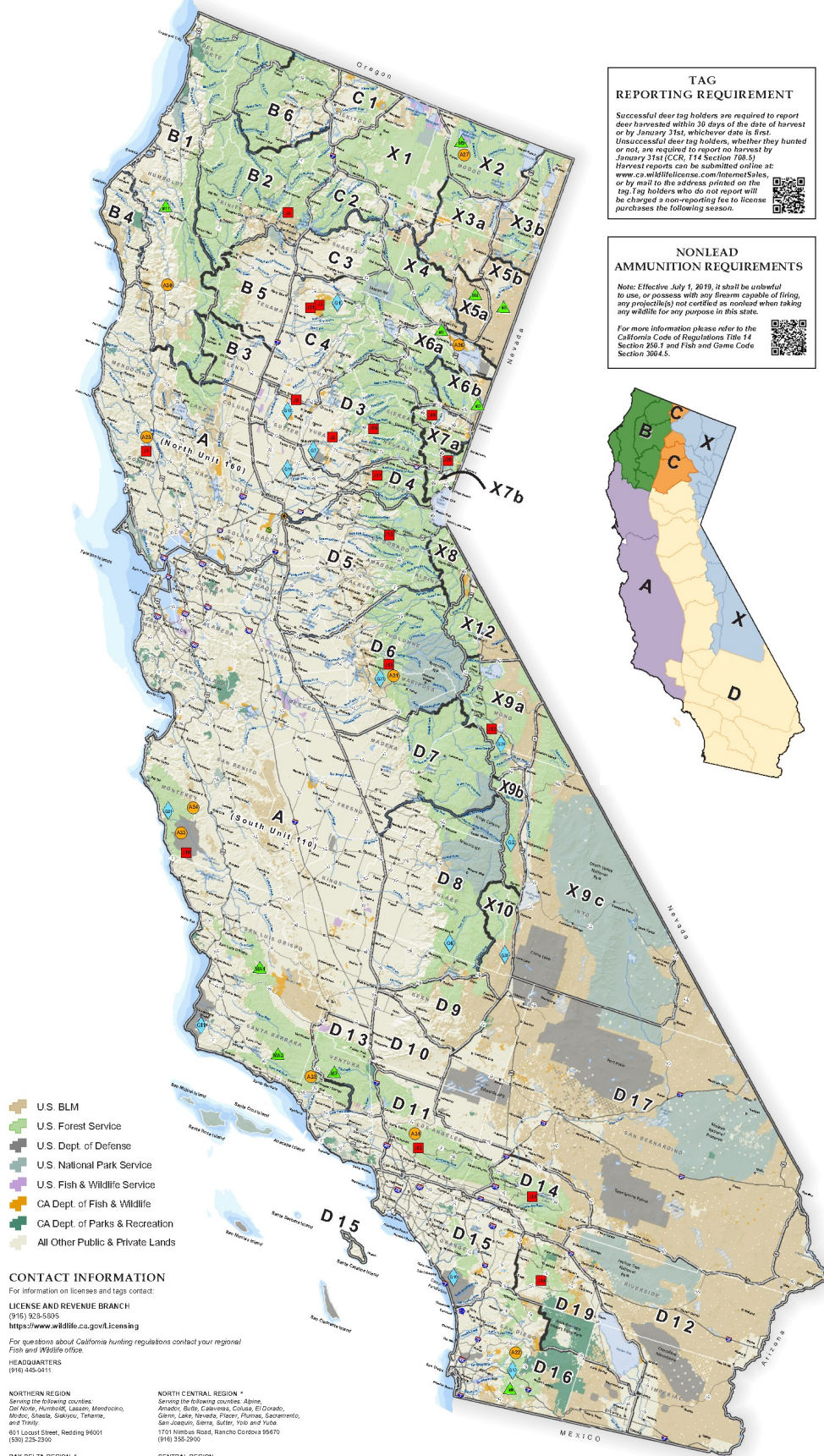
(Symbols represent approximate hunt locations only. For complete hunt boundary information, please refer to the California Code of Regulations Title 14.)

- ARCHERY**
  - A1-A20 See Deer Hunt Seasons by Zone Table
  - A-21 NOV 11 - NOV 24 Anderson Flat Archery Buck Hunt
  - A-22 SEPT 02 - OCT 15 San Diego Archery Either-Sex Deer Hunt (Split Season)
  - A-24 OCT 14 - NOV 12 Monterey Archery Either-Sex Deer Hunt
  - A-25 OCT 07 - OCT 10 Lake Sonoma Archery Either-Sex Deer Hunt
  - A-26 NOV 08 - DEC 01 Bass Hill Archery Buck Hunt
  - A-27 OCT 28 - NOV 12 Devils Garden Archery Buck Hunt
  - A-30 NOV 11 - NOV 26 Coweely Archery Buck Hunt
  - A-31 SEPT 23 - DEC 31 Los Angeles Archery Either-Sex Deer Hunt
  - A-32 NOV 11 - DEC 03 Ventura/Los Angeles Late Season Archery Either-Sex Deer Hunt
  - A-33 OCT 07 - NOV 11 Fort Hunter Lygett Late Season Archery Either-Sex Deer Hunt
- GENERAL**
  - G-1 OCT 28 - NOV 05 Late Season Buck Hunt in Zone C-4
  - G-3 DEC 02 - DEC 17 Goodale Buck Hunt
  - G-6 DEC 02 - DEC 10 Kern River Deer Head Buck Hunt
  - G-7 AUG 19 - NOV 12 Beale Either-Sex Deer Hunt (Military Only)
  - G-10 SEPT 02 - DEC 03 Camp Pendleton Either-Sex Deer Hunt (Military Only)
  - G-11 AUG 25 - OCT 1 Vandenberg Either-Sex Deer Hunt (Military Only)
  - G-12 SEPT 16 - SEPT 24 Gray Lodge Shotgun Either-Sex Deer Hunt
  - G-13 OCT 28 - NOV 19 San Diego Antelope Deer Hunt
  - G-19 SEPT 23 - DEC 31 Santa Yuba Wildlife Areas Either-Sex Deer Hunt
  - G-21 NOV 11 - DEC 03 Ventura Wilderness Buck Hunt
  - G-37 NOV 25 - DEC 03 Anderson Flat Buck Hunt
  - G-38 OCT 21 - NOV 05 Late Season Buck Hunt in Zone X10
  - G-39 OCT 28 - NOV 12 Round Valley Late Season Buck Hunt
- APPRENTICE**
  - J-1 NOV 04 - NOV 05 Lake Sonoma Apprentice Either-Sex Deer Hunt
  - J-3 NOV 25 - NOV 26 Tehama Wildlife Area Apprentice Buck Hunt
  - J-4 NOV 25 - DEC 03 Shasta-Timberline Apprentice Buck Hunt
  - J-8 DEC 02 - DEC 31 Daugherty Hill Wildlife Area Apprentice Either-Sex Deer Hunt
  - J-9 SEPT 16 - SEPT 24 Little Dry Creek Apprentice Shotgun Either-Sex Deer Hunt
  - J-10 SEPT 30 - OCT 1, 9 Fort Hunter Lygett Apprentice Either-Sex Deer Hunt
  - J-11 NOV 18 - NOV 26 San Bernardino Apprentice Either-Sex Deer Hunt
  - J-12 DEC 02 - DEC 17 Round Valley Apprentice Buck Hunt
  - J-13 NOV 18 - NOV 26 Los Angeles Apprentice Either-Sex Deer Hunt
  - J-14 NOV 18 - NOV 26 Riverside Apprentice Either-Sex Deer Hunt
  - J-15 NOV 25 - DEC 03 Anderson Flat Apprentice Buck Hunt
  - J-16 SEPT 23 - OCT 29 Bucks Mountain/Nevada City Apprentice Either-Sex Deer Hunt
  - J-17 SEPT 23 - OCT 29 Blue Canyon Apprentice Either-Sex Deer Hunt
  - J-18 SEPT 23 - OCT 29 Pacific/Glory Fire Apprentice Either-Sex Deer Hunt
  - J-19 OCT 07 - OCT 22 Zone X-7a Apprentice Either-Sex Deer Hunt
  - J-20 OCT 07 - OCT 22 Zone X-7b Apprentice Either-Sex Deer Hunt
  - J-21 SEPT 16 - OCT 01 East Tehama Apprentice Either-Sex Deer Hunt
- MUZZLELOADING RIFLE**
  - M-3 NOV 18 - NOV 26 Doyle Muzzleloading Rifle Buck Hunt
  - M-4 OCT 28 - NOV 05 Horse Lake Muzzleloading Rifle Buck Hunt
  - M-5 OCT 28 - NOV 05 East Lassen Muzzleloading Rifle Buck Hunt
  - M-6 DEC 16 - DEC 31 San Diego Muzzleloading Rifle Either-Sex Deer Hunt
  - M-7 NOV 25 - DEC 10 Ventura Muzzleloading Rifle Either-Sex Deer Hunt
  - M-8 OCT 28 - NOV 05 Bass Hill Muzzleloading Rifle Buck Hunt
  - M-9 OCT 28 - NOV 12 Devils Garden Muzzleloading Rifle Buck Hunt
  - M-11 NOV 11 - NOV 26 Northwestern California Muzzleloading Rifle Buck Hunt
- MUZZLELOADING RIFLE/ARCHERY**
  - MA-1 NOV 25 - DEC 10 San Luis Obispo Muzzleloading/Archery Either-Sex Deer Hunt
  - MA-3 NOV 25 - DEC 10 Santa Barbara Muzzleloading/Archery Buck Hunt

For more detailed zone specific maps and information, harvest data, and other deer related subjects scan QR code or visit the Deer Management Homepage at <http://www.wildlife.ca.gov/hunting/deer>



Produced by the Deer Management Program  
California Department of Fish & Wildlife



#### CONTACT INFORMATION

For information on licenses and tags contact:

**LICENSE AND REVENUE BRANCH**  
(916) 923-5805  
<https://www.wildlife.ca.gov/Licensing>

For questions about California hunting regulations contact your regional Fish and Wildlife office.

**HEADQUARTERS**  
(916) 445-0411

#### NORTHERN REGION

Serving the following counties: Del Norte, Humboldt, Lassen, Mendocino, Modoc, Shasta, Siskiyou, Tehama, and Trinity  
601 Locust Street, Redding 96001  
(530) 225-2300

#### BAY DELTA REGION \*

Serving the following counties: Alameda, Contra Costa, Marin, Napa, Sacramento, San Mateo, Santa Clara, Santa Cruz, San Francisco, San Joaquin, Solano, Sonoma, and Yuba  
2025 Cordelia Road, Suite 100, Fairfield 94534  
(707) 428-2002

#### SOUTH COAST REGION

Serving the following counties: Los Angeles, Orange, San Diego, Santa Barbara, and Ventura  
3033 Ruffin Road, San Diego 92123  
(619) 447-4021

#### NORTH CENTRAL REGION \*

Serving the following counties: Alpine, Amador, Butte, Calaveras, Colusa, El Dorado, Glenn, Lake, Nevada, Placer, Plumas, Sacramento, San Joaquin, Sierra, Sutter, Yuba and Yuba  
1701 Nimbus Road, Rancho Cordova 95670  
(916) 358-2900

#### CENTRAL REGION

Serving the following counties: Fresno, Kern, Kings, Madera, Merced, Monterey, Merced, Stanislaus, San Benito, San Luis Obispo, Stanislaus, Tulare, and Tuolumne  
1234 E. Shaw Avenue, Fresno 93710  
(559) 243-4005 Ext 151

#### INLAND DESERTS REGION

Serving the following counties: Imperial, Inyo, Mono, Riverside, and San Bernardino  
3602 Inland Empire Boulevard, Suite C-220, Ontario 91764  
(909) 464-0161

\* Note: Those portions of Sacramento, San Joaquin and Yuba counties that are south of I-80 and west of I-5 are in the Bay Delta Region; the balance of those counties are in the North Central Region.